



SAB Newsletter

SPRING EDITION
2022

Student Association Board

Michael Batame

Paulo Kagusi

John Ifejube

Ahmed Hemoudi

Archita Permata Santynawan

Chamidu Gunaratne

Akshay Kumar Chaprana

Amanda Wiafeakenteng

President

Vice - President

Academic Commissioner

Residence Commissioner

Communication Commissioner

Finance Commissioner

Sports Commissioner

Social and Gender Commissioner

Editorial Board

John Ifejube

Iván Cárdenas

Archita Mazumdar

Nishita Gajendragadkar

Chief Editor

Associate Editor

Graphics Editor

Contents Editor

Contents

-

4

Valentine's Day

6

International Women's Day

10

Crossword

11

Teacher of the Year

14

International Sports Day

16

Geo Memes



VALENTINE'S DAY

14TH FEBRUARY

On this day we celebrated Valentine's day with letters to our friends and a photo contest.

We share with you the love and friendship from this event highlighting our winners of the contest **Onur and Nishit**.



Valentin's Day photo contest Winners!





International

Women's



Day

WOMEN WHO INSPIRE US

International women's day is an opportunity to celebrate the achievements of women who despite of all the biases and difficulties have broken the glass ceilings to reach new heights.

On March 9th The Student Association Board held a special talk called: “Women who inspire us: Having successful careers in geospatial Science” focused around the theme “Breaking the biases”.

The four speakers- Caroline Gevaert, Mila, Luleva, Roshanak and Kavita Salvi spoke about their personal experiences and opinions about biases in the Geospatial sciences and how to overcome these to have a successful career.

According to the speakers, biases towards women are more pronounced in the technical work

as this kind of work is not expected from women.

However, on a positive note more and more policies on gender equality- especially in Netherlands are shaping up which are addressing some important topics like maternity and paternity leave, more grants for women to pursue their careers and so on. Even with such welcomed changes, the speakers have been in biased situation from clients regarding their work.

So how can women have a successful career in geospatial sciences?

In answer to this question, all the speakers stressed on the importance of networking and support from family and friends. Moreover, it is very important to speak to the professors and GIS groups out of ITC to stay updated on the present

WOMEN WHO INSPIRE US

and future opportunities. The presence of a mentor cannot be underestimated as they can guide you on development of various skills. It is important to hold the ground and fight for what is essential. Being patient, confident and facing your own fears to get out of the comfort zone are other important qualities to build in oneself for a successful career. Finally, women should be powerful allies at work for other women because together we can go further faster!

SAB would like to thank the incredible speakers who inspired many students at ITC to break the biases with their strong words.

We would like to thank:

- **Kavita Salvi**, Co-founder and CEO at Regalartech.
- **Mila Luleva**, Head of Remote Sensing at Rabobank.
- **Roshanak Darvishzadeh V.**, Associate Professor at ITC - University of Twente.
- **Caroline Gevaert**, Assistant Professor at ITC - University of Twente.

Special thanks to

Amanda Wiafe Akenteng, M-GEO student for organizing and moderating the talk.

EMPOWERED WOMEN OF ITC



Arivia Kesuma Puteri

"The number of female students in Geodetic Engineering major that I studied was only 24 out of 100 students that made every group projects are occupied by males. It was challenging yet unforgettable experiences since I was the only female member for group project that consist of 5 students.

The most challenging events were to do the terrestrial survey in the steep plantation area and bringing the heavy total station with the prisms, leveling rod, and all the logistics.

In the end, the group was succeed to achieve the satisfying results.

Women can contribute too!"

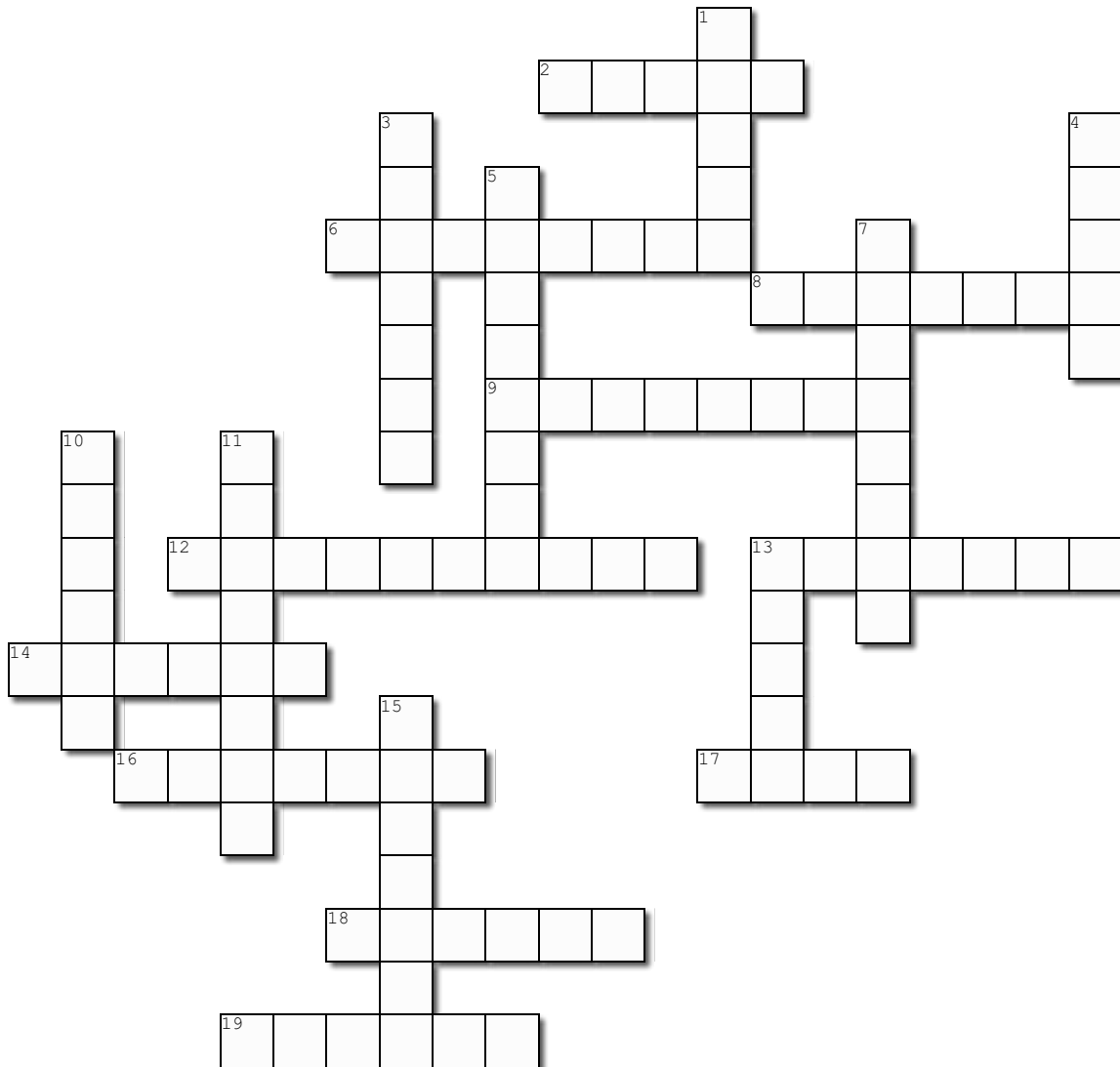


Zannat Ghani working as a development worker for an NGO working for the Persons with Disabilities!



Empowered Women of ITC
Video

CROSSWORD



Created using the Crossword Maker on TheTeachersCorner.net

Across

2. Software owned by Hexagon Geospatial
6. Resampling method which considers four nearest pixels
8. Lines connecting locations of equal value
9. A measure of data size
12. Study of ocean floors/beds
13. Popular file format for raster data
14. Pixels without data
16. GNSS created by EU
17. Most popular translator library
18. A big image acquired by combining smaller images
19. Component of map which lists and explains symbols, colours etc

Down

1. Non-imaging sensor used to measure elevation profiles
3. A statistical interpolation technique
4. Request for information to retrieve specific data using SQL
5. To transfer features from paper maps to digital format
7. Lancover/landuse classification scheme
10. Satellite collected imagery at 1-4m resolution
11. Classification method dividing classes such that total number of features in each class is approximately the same
13. The shape that the ocean surface would take under the influence of the gravity of Earth
15. The first word in 'KML'

TEACHER OF THE YEAR

I believe that our desire to discover, and share the new-found knowledge is one of the major reasons why humans are one of the most resilient creatures in the universe.

As ever-learning explorers, we have navigated through seemingly inexplicable disasters by unveiling insights in a progressive manner. The persons that ensure the knowledge transfer as professionals are our lecturers – who play exemplary roles in teaching and research.

This is the reason we love celebrating education and here at ITC, the Student Association Board helps to sustain the tradition by organizing the teacher of the year event. This event is done to recognize outstanding lecturers for their services to the profession and the students they teach.

In this year's event, the selection for the teacher of the year was split into two successive rounds. In the first round, all students were invited to vote for their

preferred teacher among possible 140 via an online poll that lasted for a week. **About 117 students participated** in this exercise and the result from grouped into the three major student clusters. 23% of the votes from 1st year M-GEO students were equally shared between **top winners Arjan and Bart**. 17% of the votes from 2nd year M-GEO were devoted to **Mariana in a clear-cut triumph. Thomas cemented** his place in the next round after racking up 33% of the votes from the M-SE group.

These lecturers were shortlisted for the next round of elections. And upon invitation, Arjan, Mariana, and Thomas were available to grace the Faculty Auditorium to make their presentations.

The seated students and members of staff were treated to three different but beautiful lectures. **Big thanks to the 15-people student jury** made up of the representatives of the student committees who carefully assessed their presentation skills, the relevance of the topic, and engagement with students.



THE WINNER!

Dr. Thomas Groen emerged the overall winner of the elections and has earned the nomination spot of the faculty for the University Twente Education Awards (UTEA).



Thomas Groen started his Academic career with a MSc in Tropical Nature conservation at Wageningen University.

After a year working at Wageningen Environmental Research, he did a PhD on Savanna Ecology, also in Wageningen.

Since 2007 he has been working at ITC, where he is combining his knowledge on ecology with the

application of remote sensing and geographical information sciences for nature conservation.

He teaches topics that are at the interface of ecology, statistics and remote sensing.

“There are things like tipping points, and they exist all over the world, but also in ecosystems. And if you cross them, that can be worked out nastily. (Since) it is very hard to predict them, we need to work on developing these early warning signals, and perhaps we can do it with remote sensing”
Dr. Thomas Groen

INTERNATIONAL SPORTS DAY

ITC has regained the title as overall winner of the International Education Sports Day. Here's to appreciate every single person that participated in this memorable event.



THANK YOU ALL!

Sport	Name	Result
Badminton	Akshay Kumar Chaprana	SECOND
	Peiyu Lai	
	Raj Kumar Ramakrishnan	
	Salar Saeed Dogar	
Basketball	Bright Chota	SECOND
	Enzo Campomanes	
	M. Tsaqif Wismadi	
	Nimisha Verma	
	Tzuhsiang Lo	
	Wildan Alicondro Dulzamirki	
	Xu Zhang	
	Yuanjing Chen	
Chess	Arun Venugopal	
	Nishit Patel	
	Rishi Pareek	
	Santiago Hidalgo Sulca	
Darts	Amir Ghamdideh	FIRST
	Arturo Cauba	
	Ashfak Mahmud	
	Jessica Soto Balvanera	
Soccer (Female)	Amanda De Liz Arcari	THIRD
	Anna Arora	
	Aulia Imania Sukma	
	Shanmathi Barathidhasan	
	Zannat Ara Ghani	

Soccer (Male)	Carlos Campoverde	SECOND
	Rufat Namazov	
	Kagusi Kagusi	
	Schadrack Tuyishime	
	Roy Joannides	
	John Ifejube	
	Paul Kyeku	
	Jaykumar Harishbhai Gohil	
Soccer (Male) II	Nazif Umar	THIRD
	Haftom Gebremeskel	
	Girma Tsige	
	Biman Biswas	
	Jean Clement Abayisenga	
	Getnet Ayalew	
	Mohammedawel Jeneto vMohammed	
	Blessing Munakamwe	
Running	Carlos Campoverde	SECOND
	Daksh Singh	
	Dennis Ushiña	
	John Ifejube	
	Mira Kenzhebey	
	Said Mukhtar Ahmad	
	Schadrack Tuyishime	
Zeyu Xu		

Table Tennis	Ama Serwah Boakye	THIRD
	Ashik Bhari Shivaprasad	
	Charlyne Jepkosgei	
	Meenal Sharma	
	Yassine Labbassi	
Volleyball	Akhil Chhibber	
	Amir Ghamdideh	
	Daksh Singh	
	Girma Tsige	
	Jorges Nofulla	
	Joseph Rajul	
	Mwangala Simate	
	Onurcan Cirpik	
Supporter	Ahmed Babiker Mohamed Hemoudi	
	Archita Mazumdar	
	Archita Permata Santynawan	
	Chamidu Gunaratne	
	Mbali Mahlayeye	
	Michael Batame	
Vincent Bosire		

GEO MEMES



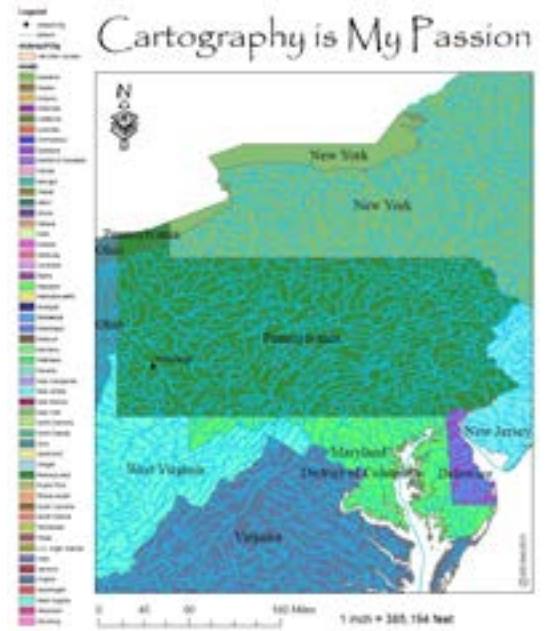
@ JEAFFREEZY



@ LIMA_VOLANTE



U/GEO-SPECIAL



@ EBREEDON

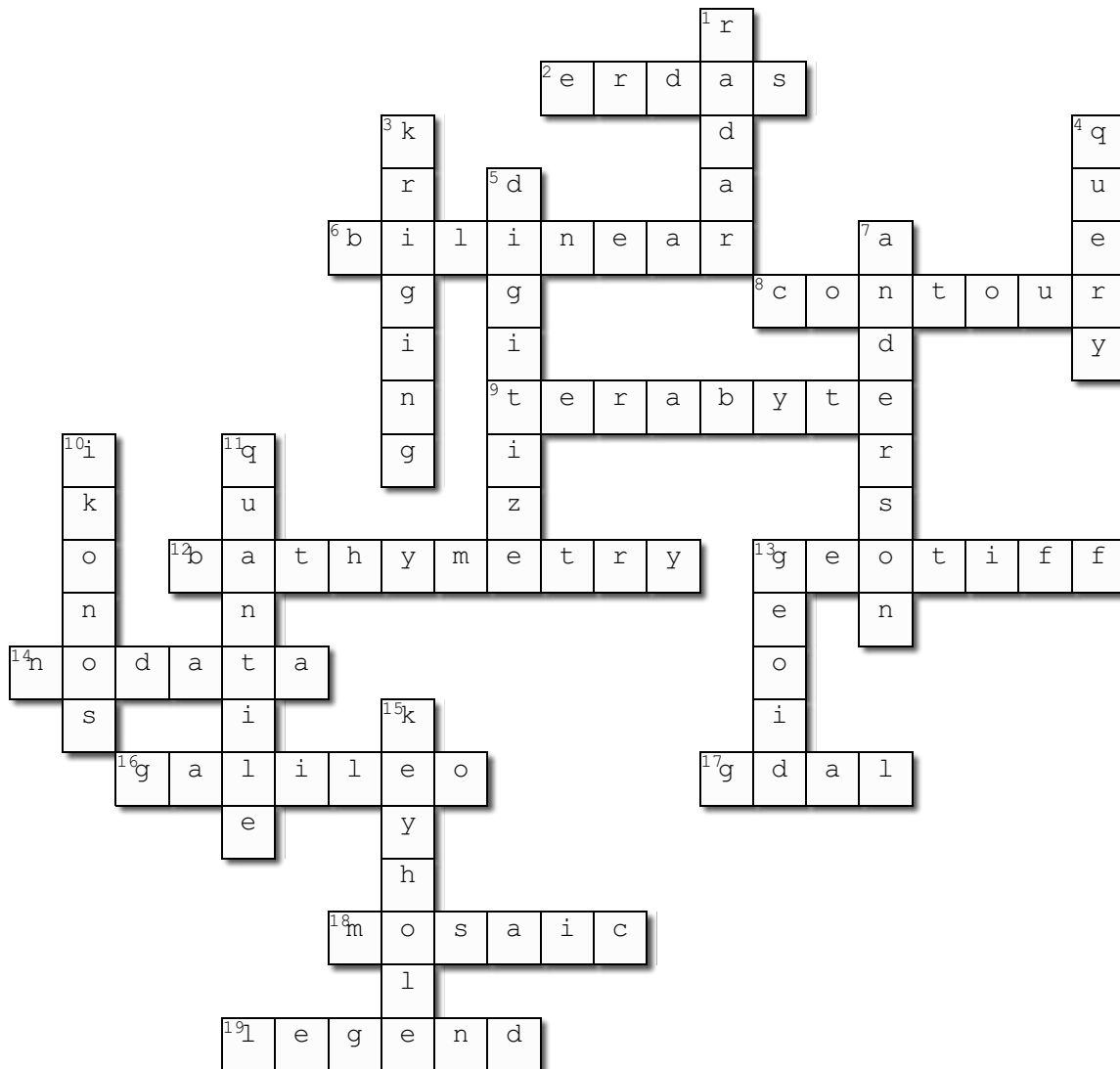


@ MATTHEWHMALONE



@ ADRIENNEHEDGER

CROSSWORD ANSWERS



Created using the Crossword Maker on TheTeachersCorner.net

Across

- 2. Software owned by Hexagon Geospatial (**erdas**)
- 6. Resampling method which considers four nearest pixels (**bilinear**)
- 8. Lines connecting locations of equal value (**contour**)
- 9. A measure of data size (**terabyte**)
- 12. Study of ocean floors/beds (**bathymetry**)
- 13. Popular file format for raster data (**geotiff**)
- 14. Pixels without data (**nodata**)
- 16. GNSS created by EU (**galileo**)
- 17. Most popular translator library (**gdal**)
- 18. A big image acquired by combining smaller images (**mosaic**)
- 19. Component of map which lists and explains symbols, colours etc (**legend**)

Down

- 1. Non-imaging sensor used to measure elevation profiles (**radar**)
- 3. A statistical interpolation technique (**kriging**)
- 4. Request for information to retrieve specific data using SQL (**query**)
- 5. To transfer features from paper maps to digital format (**digitize**)
- 7. Lancover/landuse classification scheme (**anderson**)
- 10. Satellite collected imagery at 1-4m resolution (**ikonos**)
- 11. Classification method dividing classes such that total number of features in each class is approximately the same (**quantile**)
- 13. The shape that the ocean surface would take under the influence of the gravity of Earth (**geoid**)
- 15. The first word in 'KML' (**keyhole**)



SAB-ITC@UTWENTE.NL